



# RYC3725CT-50R0GN-2T-01



WWW.BARRYIND.COM

## Aluminum Nitride

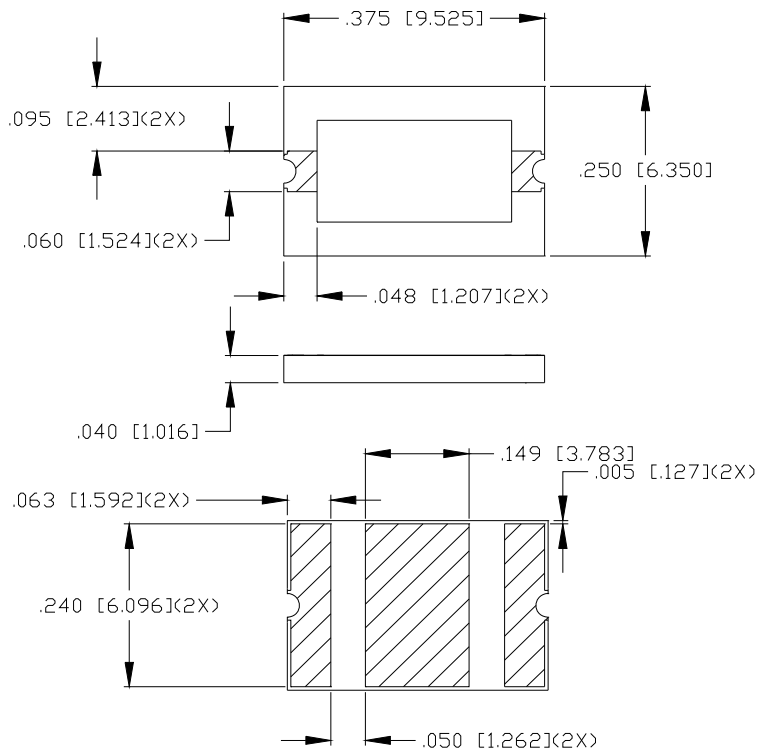
## POWER CHIP RESISTOR

### Features:

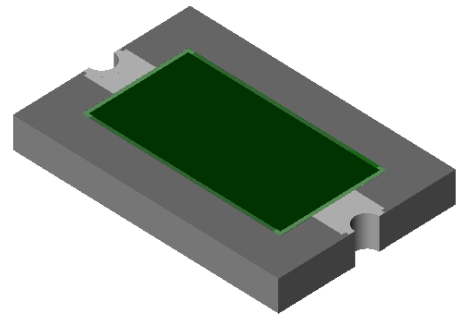
- ◆ Aluminum Nitride Material
- ◆ 50 Watt Input Power
- ◆ CT = Matte Tin over Nickel over Silver
- ◆ Surface Mountable

### General Description:

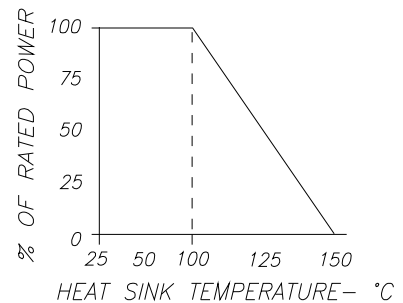
The RYC3725CT-50R0GN-2T-01 is a 50 ohm surface mountable power chip resistor. It has an input power rating of 50 watts, while maintaining a constant mounting surface temperature of 100°C.



Dimensions in inches [mm]  
Tolerance  $\pm .005$  [.127]  
unless otherwise stated



### DERATING CURVE:



Parameter	Min.	Typ.	Max.	Units
Input Power			50	Watts
Resistance	49	50	51	Ohms
Mounting Surface Temperature			100 150 (0% Power)	°C

Barry Industries reserves the right to change part number and or process without notification.

Barry Industries, Inc., 60 Walton St., Attleboro, MA 02703 T: 508-226-3350 F: 508-226-3317 E-mail: ABSales@Vishay.com

Barry Industries maintains an ISO 9001 Certified Quality Management System

Origination Date	Revision Date	Rev.
06/04/12	06/04/12	-